

What is Natural Church Development?

Natural Church Development (NCD) is a “principle-oriented” approach to church health and growth. Instead of imitating the experiences of other churches, NCD sought to find the core “principles” that apply to all growing churches around the globe. Every church and community is different, but the core principles of church growth and its characteristics are universal.

Who was studied?

- 1,000 different churches on five continents
- 32 countries
- 18 languages
- 4.2 million pieces of data
- large and small
- growing and declining
- churches persecuted by the state and churches financially supported by the state
- well-known churches and totally unknown churches
- churches from areas currently experiencing great spiritual revivals, as well as from regions which appear to be more spiritually developing.



**Deeper in Christ...
Further in Mission.**

Evangelical Methodist Church
Department of Publications
P. O. Box 17070
Indianapolis, IN 46217
Phone: 317-780-8017
Email: Headquarters@emchurch.org

Natural Church Development

The Journey to Church Health in the
Evangelical Methodist Church



Learn the 8 Quality Characteristics Used by God to build his church!

1. Empowering Leadership
2. Gift-based Ministry
3. Passionate Spirituality
4. Effective Structures
5. Inspiring Worship Services
6. Holistic Small Groups
7. Need-oriented Evangelism
8. Loving Relationships



God designed the church to grow.

The first question to answer is ‘Why Natural Church Development (NCD)?’ The pastor must be informed to answer this question.

The resources are found at:

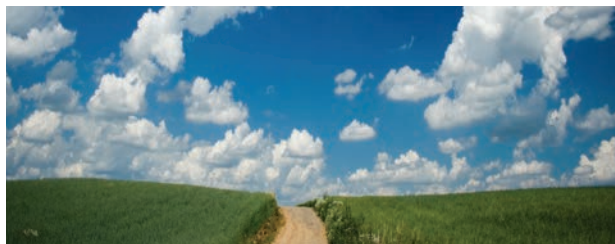
- www.churchsmart.com
- www.ncd-international.org
- Connection Magazine, October-December 2009, pages 6-7 - <http://emchurch.org/pdf/ConnectionOND2009.pdf>
- EMC Publications resource brochure- “Natural Church Development: The Journey to Church Health in the Evangelical Methodist Church”
- ChurchSmart Resources brochure by Christian A. Schwarz - “The ABC’s of Natural Church Development”
- ChurchSmart Resources book by Christian A. Schwarz - “Natural Church Development”

Journey to Health Step 1: Introduction Phase

- Contact the Conference Superintendent about enrolling your church in the ‘Journey to Health’.
- Prepare your Church Board for an online discussion or in person review with the Conference Superintendent about an overview of the process.
- The time commitment is 18 months. This will include two cycles, two surveys, and the coach.
- The enrollment costs are \$500. This includes two surveys, eighteen months of direct coaching, introductory materials, and 20% discount on NCD materials through the Department of Publications.
- Secure a positive vote of the local church board/church council for enrolling.

Journey to Health Step 2: Prepare

- Select the Church Health Intercessors
- Select the Church Health Team
- Orientation of the teams with the Conference Superintendent (Coach)



Journey to Health Step 3: Diagnose

- Worship Service with the Sermon, ‘What makes a Healthy Church’ by a Superintendent and a ceremony to sign a covenant of church-wide prayer for leaders and the process.
- Selection of the persons to be surveyed by the Church Health Team and pastor. The distribution of the survey.
- Results of the survey returned to the church following a review by the Cabinet of Superintendents.

Journey to Health Step 4: Plan

- The Church Health Team evaluates the Minimum Factor results with analysis.
- Develop the strategies toward health
- Coaching plan with church by the Superintendent

Journey to Health Step 5: Implement and Evaluate

- Develop change strategies with appropriate change dynamics.
- Brainstorming: Sermon Series by the pastor on the eight characteristics; sermons on prayer; specific teaching and preaching on the focus for the first year to raise the minimum factor.